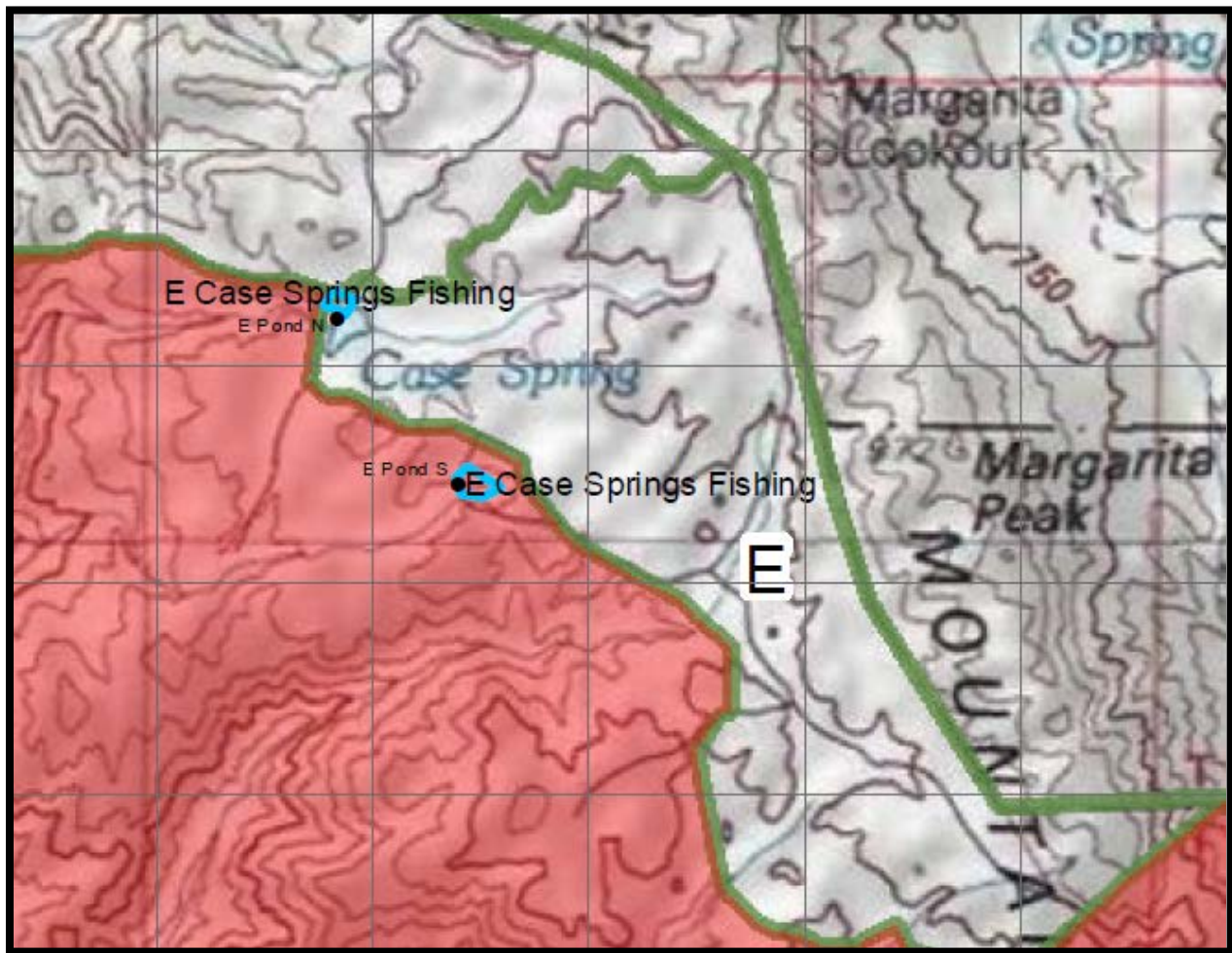


Echo Ponds:

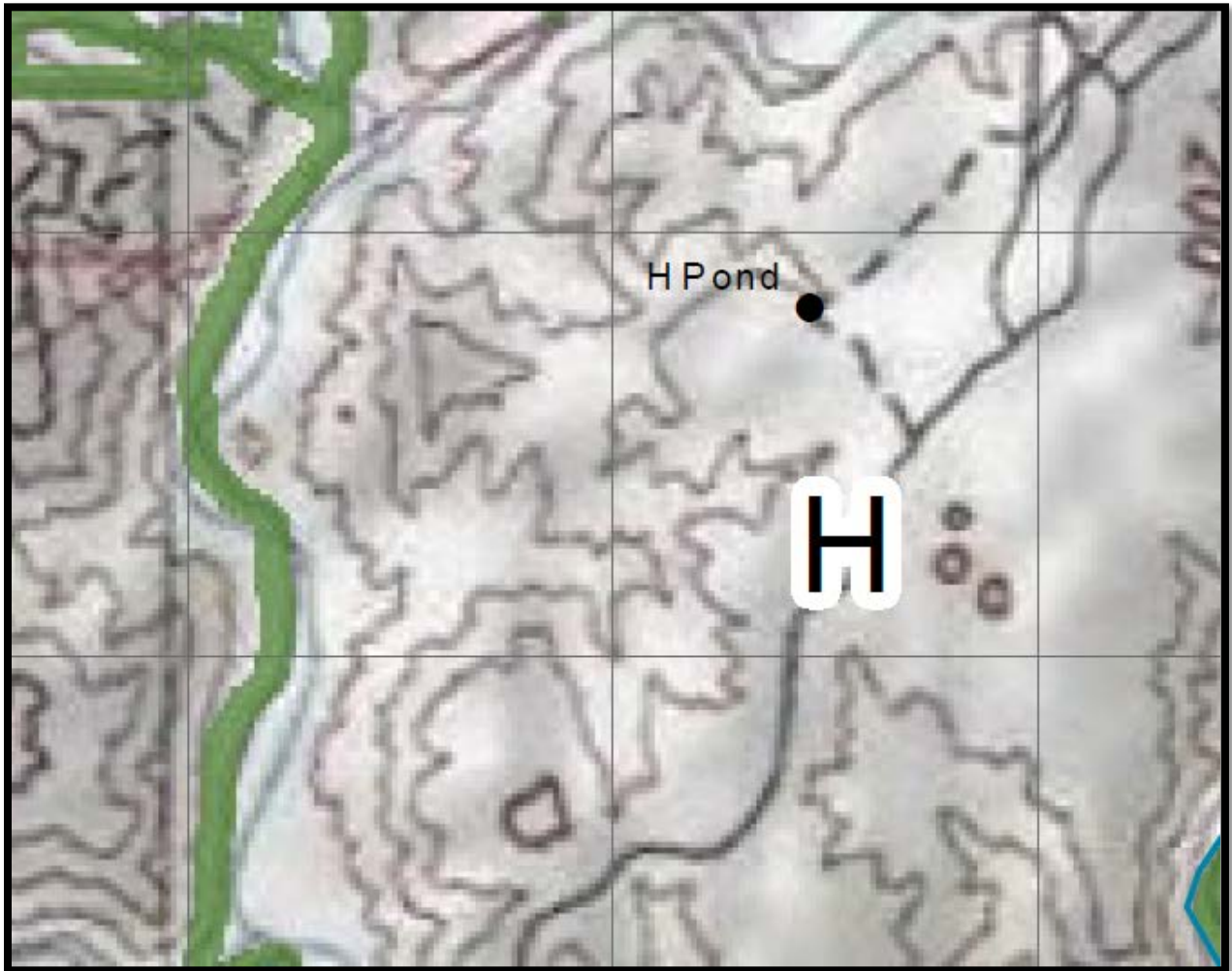
From Vandgrift turn north on Basilone. Drive a few miles until two north bound lanes merge to one. Take a right on a dirt road. Travel straight on this road for approximately 10 miles (part of the road is paved and climbs about 2000 feet in elevation. At the Y do not turn towards the fire station.

South pond will be on your left near R800, the boat is secured on the north side of the pond. Continue straight one more mile to reach the north pond, which will be near a combat town. The blind is on the south side of the pond.



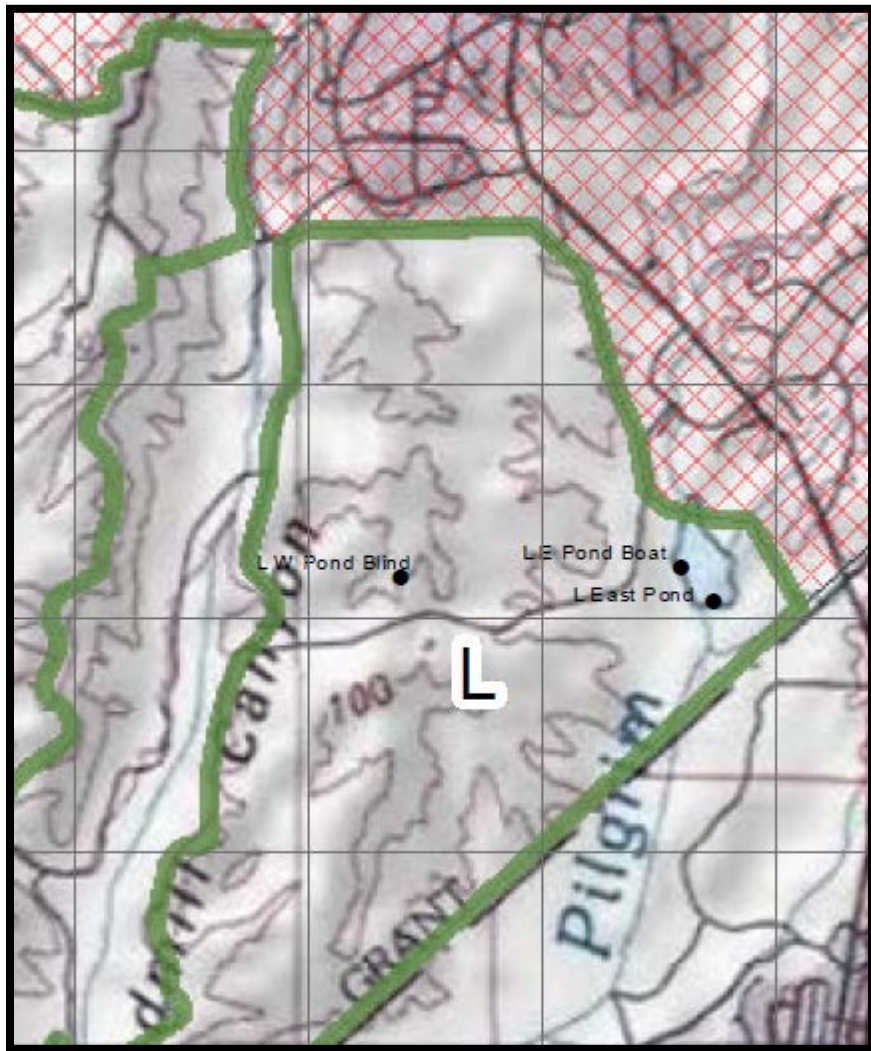
Hotel Pond:

To get to the Hotel pond: From Vandegrift turn north on Deluz Road. Continue past the housing areas and cross the river. Take the first right after the river (before the combat town). Follow the road for about three miles and park at AFA 39. Walk west to the pond.



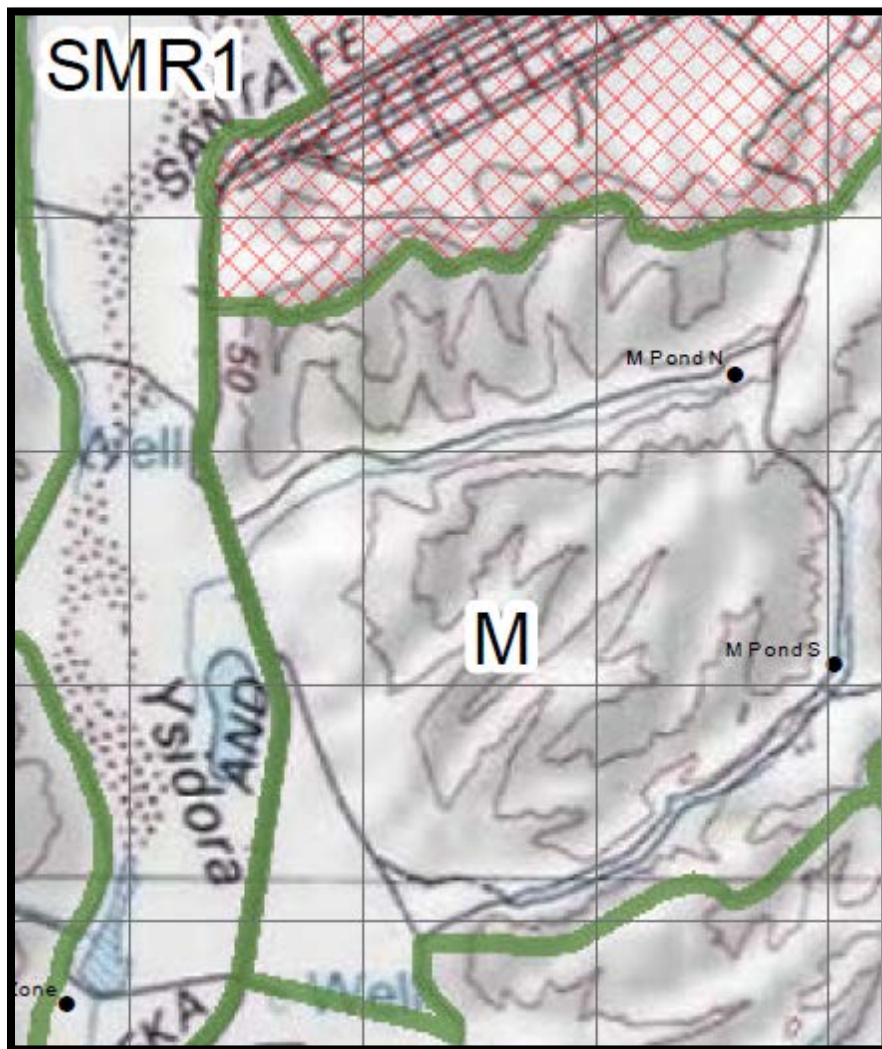
Lima Ponds:

Lima West Pond is near the golf course. Turn on the golf course road and travel south for about 1.5 miles. Turn left on a dirt road and travel about a half mile. Lima East Pond is near the San Luis Rey gate. From Vandegrift, turn west on a dirt road just north of the SLR gate. Travel about a few hundred yards. The boat is parked next to the blind. The blind is small and fits two. The third person should use the boat to hunt the northern part of the pond.



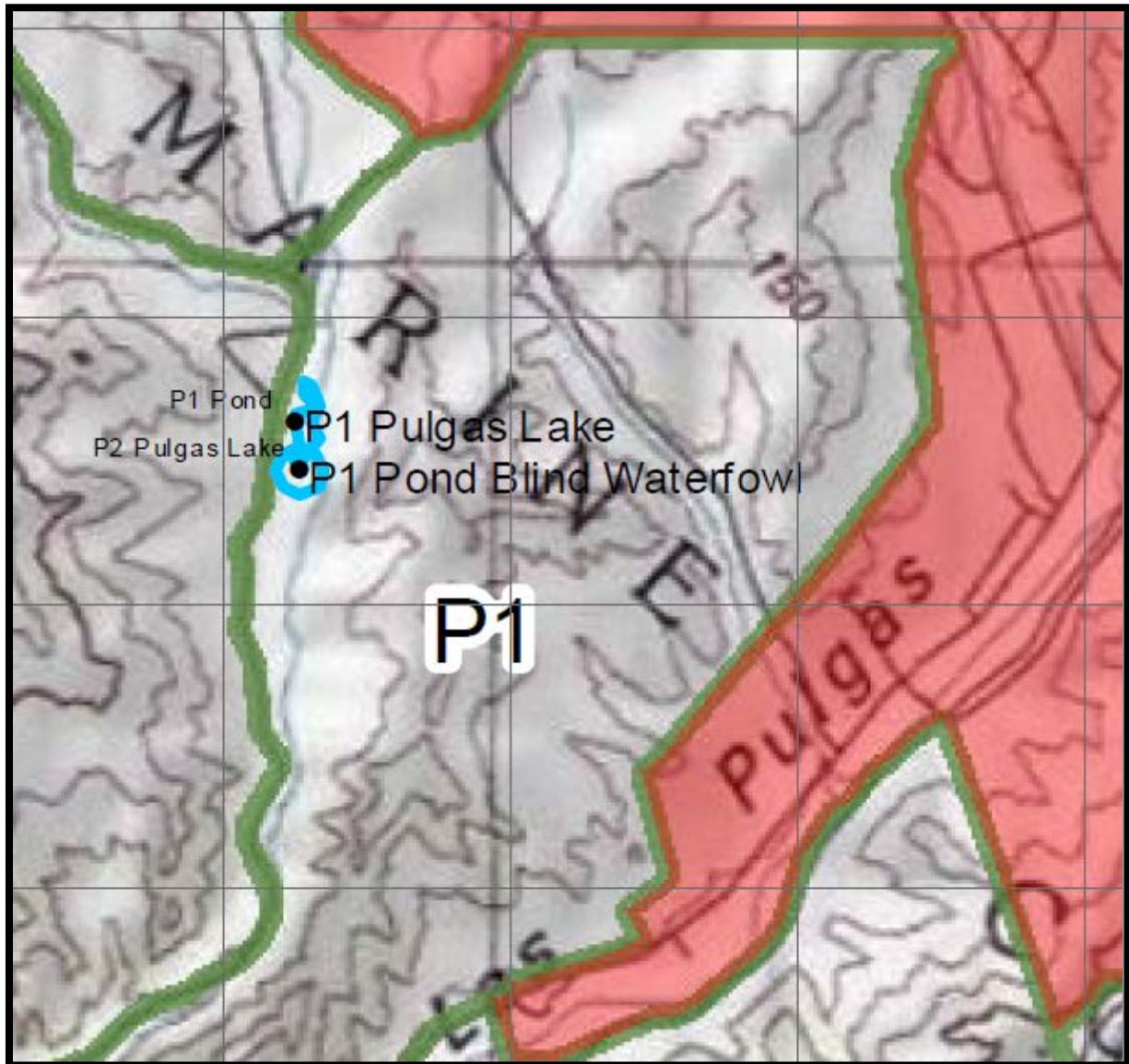
Mike Ponds:

The Mike ponds are reached from Vandegrift road (shown as the west boundary of Mike on this map) just south of the 22 area. To Mike Pond North: turn east on the first dirt just south of the 22 area. Drive east on this canyon road about 1.5 miles. To Mike Pond South: drive to Mike Pond N and turn right on the dirt road immediately after the pond. Drive south about 1 mile.



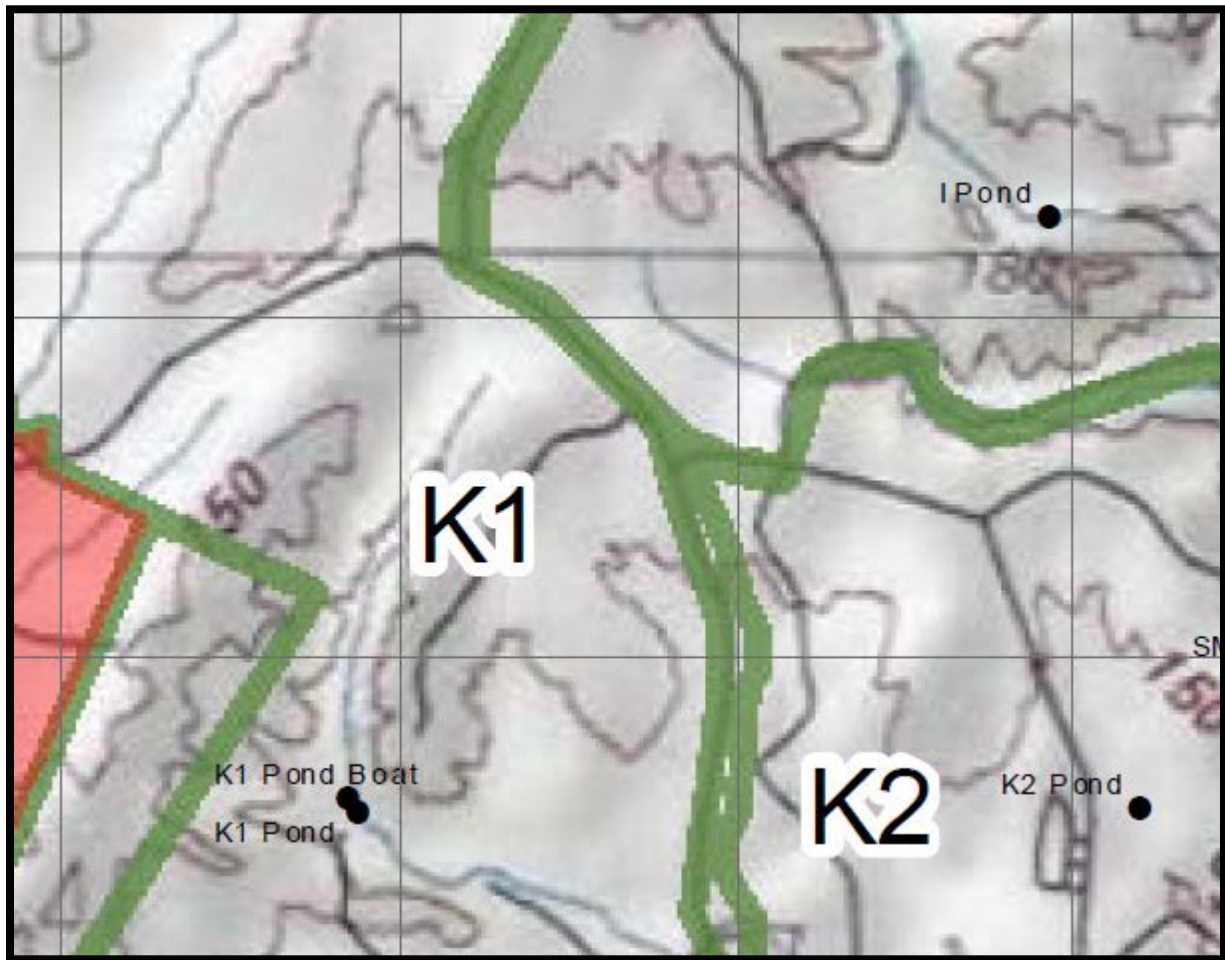
Papa 1 Blind:

From Basilone turn west towards the Ammunition Supply Point. Drive to the end of the dirt parking lot and continue on the dirt road. Take a right at the fork and pass the combat town. Park under the oaks on the left.



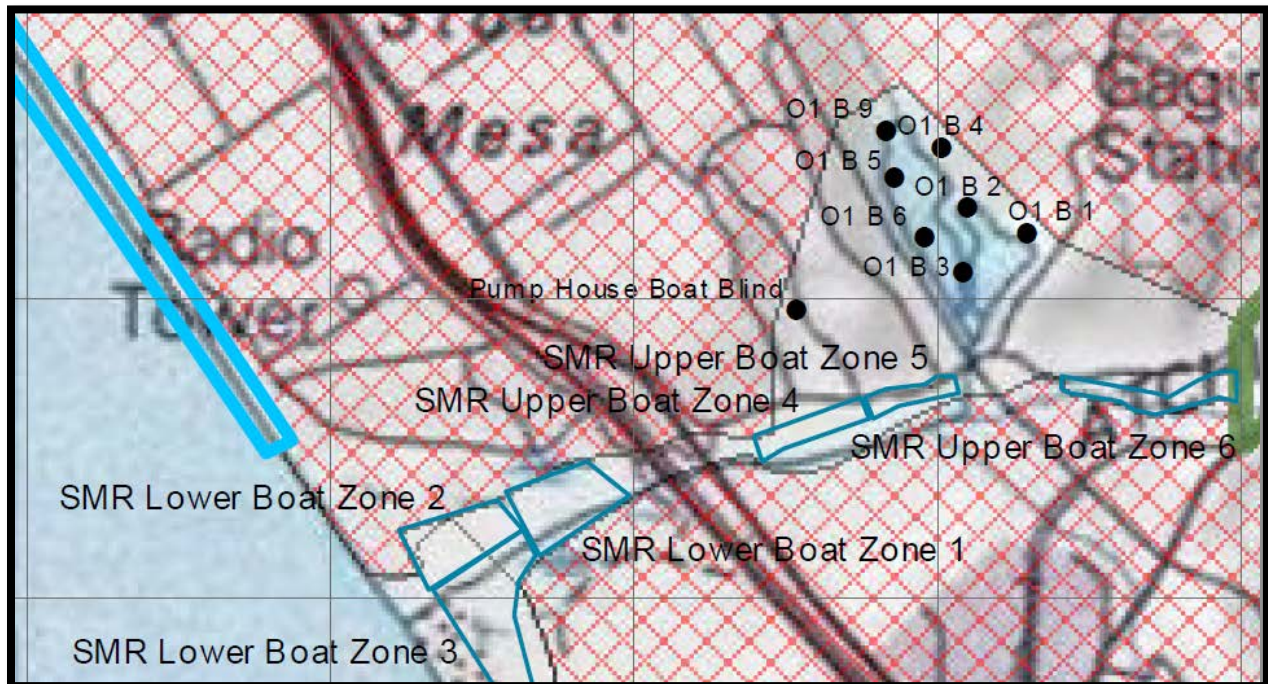
SMR2 Blinds:

To get to the SMR2 blinds 1-6 (also called the Perc ponds): from Vandegrift turn north on Santa Margarita road towards Lake O'Neill. Across from the old hospital turn west on a dirt road. That dirt road will lead you to all of the Perc ponds. To get to SMR2 Weir blind: it's on the west side of the river so access it through India TA. From Vandegrift turn north on Basilone. After a few miles turn east towards the K2 combat town. Turn north immediately before the combat town. Continue straight until you reach the river, then turn north for a few hundred yards. The blind will be on your left. To reach the SMR2 River Blind: from Vandegrift road turn north on Santa Margarita road towards the old hospital. Continue straight and make the sharp 90 degree turn to the right. Take the next left and an immediate left into a parking areas. The blind will be on the river below your parking spot.



SMR Boat Zones and Oscar-1 Ponds:

To reach the boat zone launch point: from Stuart Mesa turn west on the dirt road just north of the river. Park underneath the I-5 bridge and launch your boat. It's very important to not take any shots in the direction of the freeway or the Stuart Mesa road. Also, do not set up ground blinds in the boat zones. Boat zone hunting must be done from a boat. To reach the O-1 ponds (also known as the Stuart Mesa ponds): from Stuart Mesa turn east on the road just north of the river. Parking will be on the left side of the road. Walk into the blinds. To reach the Pump House blind: From Vandegrift turn north on Stuart Mesa. After the river take left on a dirt road. Drive about 500 yards and turn north on a dirt road that leads to a draw. The pump house is at the end of the road.



White Beach Blinds:

From Stuart Mesa turn west on the dirt road opposite of the R130 sign. Go straight to reach White Beach North or turn left after the freeway to get to White Beach South. Do not trim vegetation.

